



LABORATORY GROWN DIAMOND REPORT

December 27, 2025
 IGI Report Number **LG756544855**
 Description **LABORATORY GROWN DIAMOND**
 Shape and Cutting Style **ROUND BRILLIANT**
 Measurements **4.15 - 4.17 X 2.68 MM**

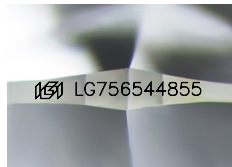
GRADING RESULTS

Carat Weight **0.29 CARAT**
 Color Grade **D**
 Clarity Grade **VVS 2**
 Cut Grade **VERY GOOD**

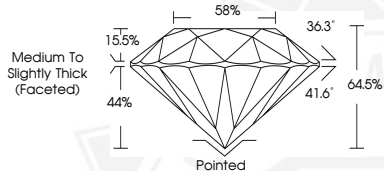
ADDITIONAL GRADING INFORMATION

Polish **VERY GOOD**
 Symmetry **VERY GOOD**
 Fluorescence **NONE**
 Inscription(s) **IGI LG756544855**

Comments: As Grown - No indication of post-growth treatment. This Laboratory Grown Diamond was created by High Pressure High Temperature (HPHT) growth process. Type II



Sample Image Used



December 27, 2025
 IGI Report Number **LG756544855**
 ROUND BRILLIANT
 LABORATORY GROWN DIAMOND
 4.15 - 4.17 X 2.68 MM
 Carat Weight **0.29 CARAT**
 Color Grade **D**
 Clarity Grade **VVS 2**
 Cut Grade **VERY GOOD**
 Polish **VERY GOOD**
 Symmetry **VERY GOOD**
 Fluorescence **NONE**
 Inscription(s) **IGI LG756544855**

Comments: As Grown - No indication of post-growth treatment. This Laboratory Grown Diamond was created by High Pressure High Temperature (HPHT) growth process. Type II



December 27, 2025
 IGI Report Number **LG756544855**
 ROUND BRILLIANT
 LABORATORY GROWN DIAMOND
 4.15 - 4.17 X 2.68 MM
 Carat Weight **0.29 CARAT**
 Color Grade **D**
 Clarity Grade **VVS 2**
 Cut Grade **VERY GOOD**
 Polish **VERY GOOD**
 Symmetry **VERY GOOD**
 Fluorescence **NONE**
 Inscription(s) **IGI LG756544855**

Comments: As Grown - No indication of post-growth treatment. This Laboratory Grown Diamond was created by High Pressure High Temperature (HPHT) growth process. Type II

THIS DOCUMENT WAS PRODUCED WITH THE FOLLOWING SECURITY MEASURES: SPECIAL DOCUMENT PAPER, INK SCREENS, WATERMARK, BACKGROUND DESIGNS, HOLOGRAM AND OTHER SECURITY FEATURES NOT LISTED AND DO EXCEED DOCUMENT SECURITY INDUSTRY GUIDELINES.